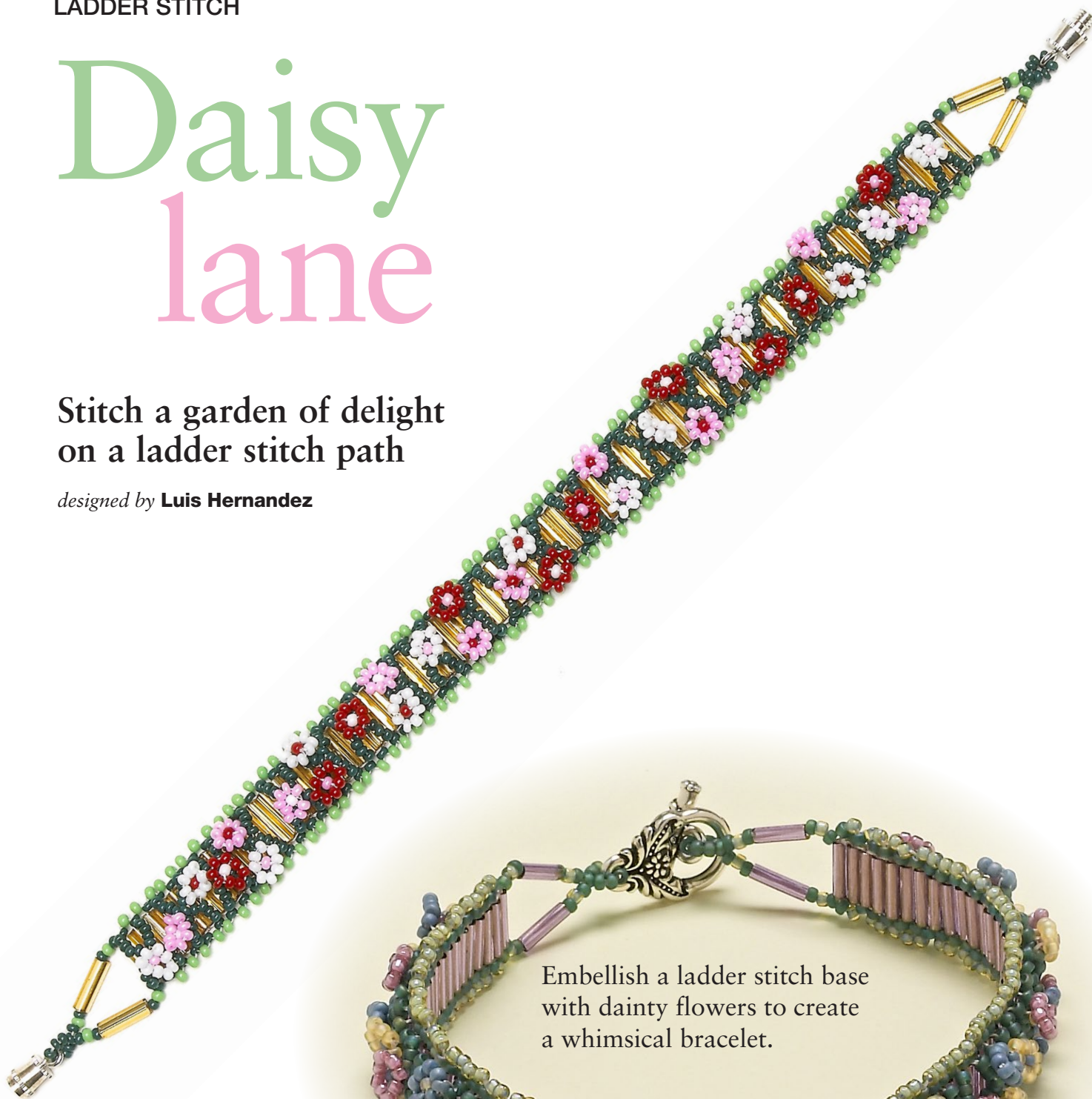


LADDER STITCH

# Daisy lane

Stitch a garden of delight  
on a ladder stitch path

*designed by* **Luis Hernandez**

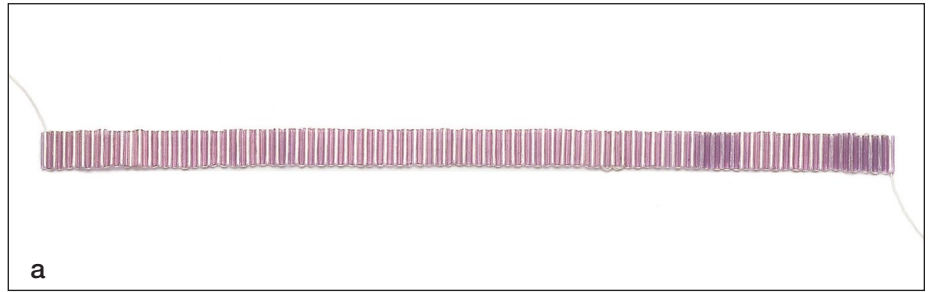


Embellish a ladder stitch base  
with dainty flowers to create  
a whimsical bracelet.

## MATERIALS

bracelet 7½ in. (19.1 cm)

- 3 g 6 mm bugle beads
- 15° seed beads
  - 2 g color A (dark green)
  - 1 g color B (light green)
- 1 g in each of 3 colors: C, D, E
- clasp
- nylon beading thread, size B, or Fireline 6 lb. test
- beading needles, #12



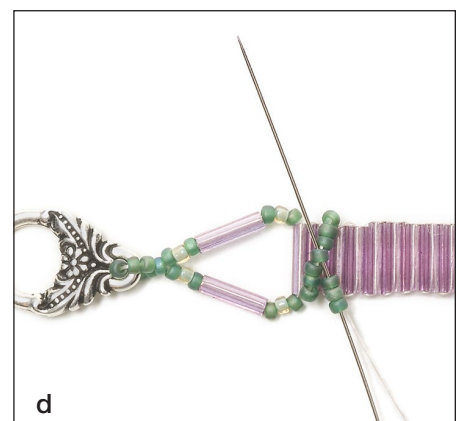
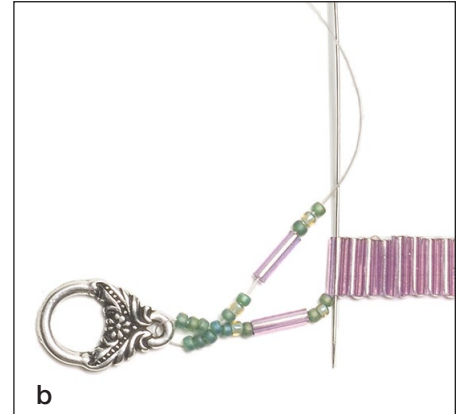
## stepbystep

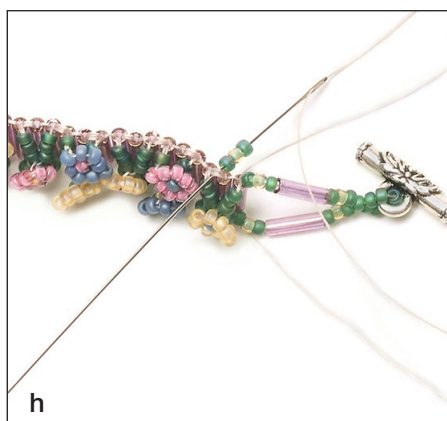
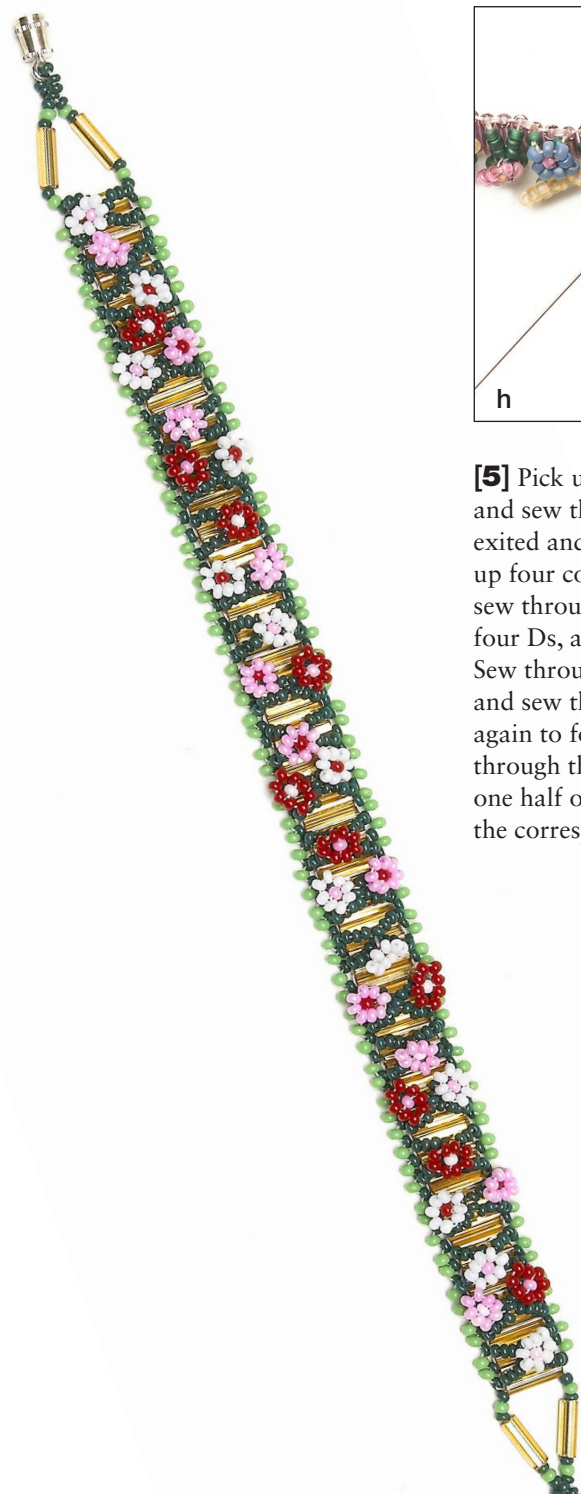
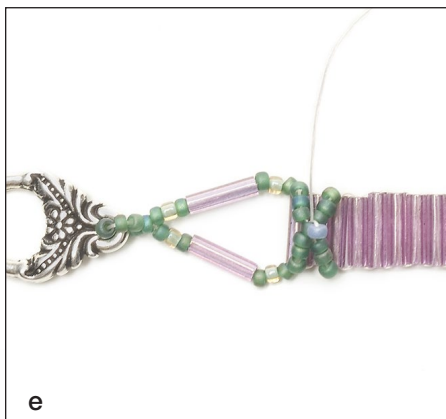
**[1]** On a comfortable length of thread, pick up two bugle beads, leaving a 24-in. (61 cm) tail. Sew through both bugles again. Working in ladder stitch (Online Basics), make a strip (**photo a**) that is 1½ in. (3.8 cm) shorter than the desired length of the finished bracelet, ending and adding thread (Online Basics) as needed. Make sure the number of bugles is divisible by three.

**[2]** With your thread exiting an end bugle, pick up a color A 15° seed bead, a color B 15° seed bead, an A, a bugle, an A, a B, four As, one half of the clasp, and three As. Sew back through the fourth A from the clasp to make a loop with three beads on each side of the clasp. Pick up an A, a B, an A, a bugle, an A, a B, and an A, and sew through the other end of the bugle your thread exited at the start of this step (**photo b**). Retrace the thread path to reinforce the clasp connection.

**[3]** Using the tail, repeat step 2 at the other end with the other half of the clasp. Do not end the tail.

**[4]** With your working thread exiting an end bugle, pick up seven As, skip a bugle, and sew through the next bugle (**photo c**). Add or remove beads for proper fit, making sure to use an odd number of As. Pick up three As, and sew through the middle A of the previous seven As added (**photo d**). Pick up three As, and sew through the bugle your thread exited at the start of this step to form an X. Make adjustments to the bead count as necessary, using an equal number of beads on all branches of the X. Sew through the first four As added, exiting the middle A.





**[5]** Pick up a color C 15° seed bead, and sew through the A your thread exited and the C again (**photo e**). Pick up four color D 15° seed beads, and sew through the C (**photo f**). Pick up four Ds, and sew through the C again. Sew through all eight Ds just added, and sew through the first four Ds again to form a flower (**photo g**). Sew through the C and four As, exiting one half of the X, and sew through the corresponding bugle.

**[6]** Sew through the next unembellished bugle. Repeat steps 4 and 5 along the band with the following adjustments:

- Alternate between adding one flower and two flowers on every other X.
- When adding two flowers on an X, anchor each one to a center bead on opposite branches of the X.
- Use two colors for each flower, pairing Cs, Ds, and Es as desired.

**[7]** With your thread exiting an end bugle, pick up an A, a B, and an A, and sew under the thread bridge connecting the next two bugles (**photo h**). Sew through the last A added (**photo i**). Pick up a B and an A, sew under the thread bridge connecting the next two bugles, and continue back through the last A added. Repeat, embellishing the rest of the edge, and end the thread (Online Basics). Thread a needle on the remaining tail, and repeat to embellish the other edge.