



Enameled copper

Curved tubes and a few beads make for a quick contemporary bracelet. Sara Lukkonen of C-Koop Beads makes these enameled copper components. The liquid finish and tone — ranging from earthy brown to vibrant chartreuse — are exquisite. — J.E.K.



The curved tube beads are reproductions of copper tubes from the '70s.



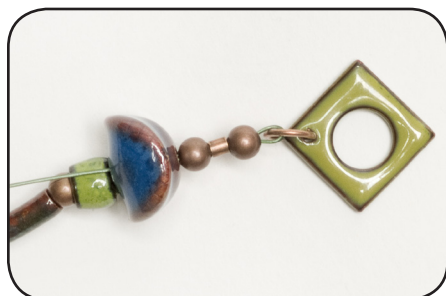
1 Cut a piece of beading wire (Basics). Center a spacer, a wave bead, and a spacer.



2 On each end, string: curved tube, spacer, drum bead, wave bead, spacer.



3 Open a jump ring (Basics) and attach half of a clasp. Close the jump ring. Repeat.



4 On each end, string a crimp bead, a spacer, and a jump ring from step 3. Check the fit, and add or remove beads if necessary. Go back through the last few beads strung and tighten the wire. Crimp the crimp bead (Basics) and trim the excess wire.



5 If desired, use the outer notch of your crimping pliers to close a crimp cover over each crimp. ●

Supply List

- 2 57 mm curved tube beads
- 3 12 mm wave beads
- 2 6 mm drum beads
- 6–10 4 mm spacers
- flexible beading wire, .014 or .015
- 2 5 mm jump rings
- 2 crimp beads
- 2 crimp covers (optional)
- toggle clasp
- chainnose and roundnose pliers, or 2 pairs of chainnose pliers
- diagonal wire cutters
- crimping pliers (optional)

Enamel beads and components from C-Koop Beads, kkoopbeads.com. Check your local bead store for supplies.

Earring options

Feeling groovy? Attach peace signs to long brass earring wires. These lock-and-key components are sized just right for earrings.

