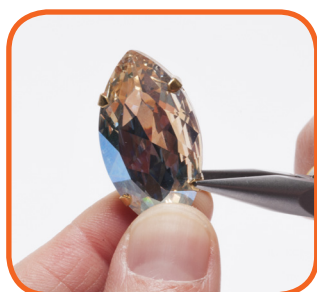


# April Diamond

Add variations of color and texture around a crystal birthstone, accenting it with spring pastels for an extra pop of color. For a vintage-meets-modern vibe, I finished the band with metallic tile and brick beads — they're delicate and keep the strand flat against your wrist. You'll find this design incredibly versatile! — *Rachel Frye*



**1** bracelet • Place a navette in a prong setting. Using chainnose pliers, gently bend a prong inward. Bend the remaining prongs inward. Set two oval rhinestones in settings.

Cut two 13-in. (33 cm) pieces of beading wire. Center the navette setting on the wires.



**2** On each side of the navette, on each wire, string a 3 mm round bead, a cube crystal, a pearl, and the corresponding hole of an oval setting.



**3** On each side, on each wire, string: the corresponding hole of a tile bead, 3 mm, tile, 3 mm, tile. String a 3 mm and three brick beads, repeating until the strand is within 1 in. (2.5 cm) of the finished length.



**4** On each wire, string a crimp bead. On each side, over both wires, string half of a toggle clasp. Go back through the last few beads strung and tighten the wire. Crimp the crimp beads (How-Tos) and trim the excess wire.

## What you'll need

### bracelet 6<sup>3</sup>/<sub>4</sub> in. (17.1 cm)

- ◆ 32 mm rhinestone navette and prong setting
- ◆ 2 10 mm oval rhinestones and prong settings
- ◆ 4 8 mm cube crystals
- ◆ 4 6 mm round pearls
- ◆ 6 6 mm two-hole tile beads

- ◆ 8–12 6 mm two-hole brick beads
- ◆ 20–24 3 mm round beads
- ◆ flexible beading wire, .014 or .015
- ◆ 4 crimp beads
- ◆ toggle clasp
- ◆ chainnose pliers
- ◆ diagonal wire cutters

- ◆ crimping pliers (optional)

Supplies from Eclectica, 262.641.0910, [eclecticabeads.com](http://eclecticabeads.com). Rhinestones also available from Dreamtime Creations, [dreamtimecreations.com](http://dreamtimecreations.com). Check your local bead store for supplies.